



# THE MINERAL VEIN

Official Newsletter of

## THE MINERAL SOCIETY OF MANITOBA

MARCH 2015

### MARCH PRESENTATION SUMMARY



#### By Marjorie Turton

Linda A. Murphy got her BSc (hons) in Geological Science from the University of Manitoba. Actually she was a late bloomer. At age 40 she went back to school, did so well that the chief offered

a scholarship to her to get a university education. In 2006 with BSc in hand, she joined the Manitoba Geological Survey, She works in the tectonostratigraphy in the Kisseynew Domain and since 2009 has taken an additional role through the development of liaison programs in partnership with Manitoba's remote and First Nation communities.

The Manitoba Geological Survey (MGS) program promotes post-secondary education, encourages mutual understandings of stakeholder needs in traditional land use areas, and provides a geology contact person should land use concerns arise.

Stepping Stones – a path toward collaboration: a liaison program building communication bridges. An effective communication bridge which mutually benefits 1st Nation communities, the mineral resource sector and all Manitobans. And also minimizes potential impacts. Long term communication bridges will hopefully provide solutions for each First Nation and the mineral industry.

Such communication encourages the strengthening of Elder-youth dialogue, and acknowledges historical land use trends with participating discussions in each community. This is a government initiative with industry partnership to develop a proactive process to bring young people together and help improve communication.



This is a partnership with MGS and the Cree Nations of Bonibonbee (Oxford House), God's Lake, Norway House, and affiliated with the University Collage of the North. The object of the project was to study, communicate, and collaborate via outdoor demonstration and classroom presentation.

At the Frontier school Wasagamack first nation – Dinbrone School near Pepper Lake presentation was about information sharing re: present jobs, careers, economic development, opportunities related to land use and the mineral resources. Then they were asked what they would like.

**(Continued on page 3)**

## THE MINERAL SOCIETY OF MANITOBA

c/o The Manitoba Museum  
190 Rupert Avenue  
Winnipeg, MB, R3B 0N2

[mineralsocietyofmanitoba.weebly.com](http://mineralsocietyofmanitoba.weebly.com)

### *The 2014-2015 Executive:*

#### **President**

Jacques Bourgeois, *ph. 204-885-5618*

#### **Vice President**

Wendy Anthony, *ph. 204-774-5613*

#### **Secretary:**

Bram Hasler

#### **Membership / Treasurer:**

Lisa Grabowski, *ph. 204-774-5097*

#### **Field Trip Chairman**

Marion Foster, *ph. 204-775-0625*

#### **Newsletter Editor**

Jacques Bourgeois, *ph. 204-467-3282*

#### **Website**

Josh Myers, *ph. 204-330-0076*

#### **Members at Large**

Marion Foster, *ph. 204-775-0625*

Josh Myers, *ph. 204-330-0076*

Peter Harms, *ph. 204-*

Yvonne Searle *ph. 204-663 6637*

#### **School Programs**

Yvonne Searle, *ph. 204-663 6637*

*The Mineral Vein* is published monthly from September to June.

**Meetings** are held on the first Wednesday of each month from September to May inclusive at the Manitoba Museum in room P47 on the Planetarium level. They begin at 7:30 PM and feature announcements, an invited speaker and a raffle. Members are encouraged to bring along any new, interesting specimens, or specimens appropriate to the speaker's topic.

**Field Trips** take place from May to September to interesting sites in Manitoba or neighbouring provinces and states.

**Membership:** A single membership is \$15 while a family membership is \$20. Memberships run from October to October.

## Table of Contents

<b>FEBRUARY PRESENTATION SUMMARY.....</b>	<b>1</b>
<b>UPCOMING EVENTS.....</b>	<b>2</b>
<b>FIELD TRIPS.....</b>	<b>2</b>
<b>GEOLOGICAL NEWS.....</b>	<b>3</b>

### **UPCOMING EVENTS**

**April 1st, 2015:** MSM regular monthly meeting begins at 7:30 p.m. at the Manitoba Museum.

"Travels in the Ordovician of the Hudson Bay Lowlands" - Dr. Graham Young (Manitoba Museum)

**May 6th, 2015:** MSM regular monthly meeting begins at 7:30 p.m. at the Manitoba Museum.

"Earth Science and Geocaching—Earth Caching!" - Jacques Bourgeois will introduce you to this hands on activity that uses GPS technology.

### **FIELD TRIPS REMINDER**

Here are the field trips planned for this summer:

1. **Thunder Bay** – to be led by Jack Bauer this trip is going to Blue Point and to the nearby amethyst mine owned by Greg Hasler.

2. **Lake Winnipegosis Narrows** quarry with Devonian fossil material with plans on visiting other quarries on the way.

**Sign up for these trips at the next meeting!**



Founded in 1971, the Mineral Society of Manitoba is dedicated to promoting the study of minerals, rocks and fossils for their scientific and recreational value.

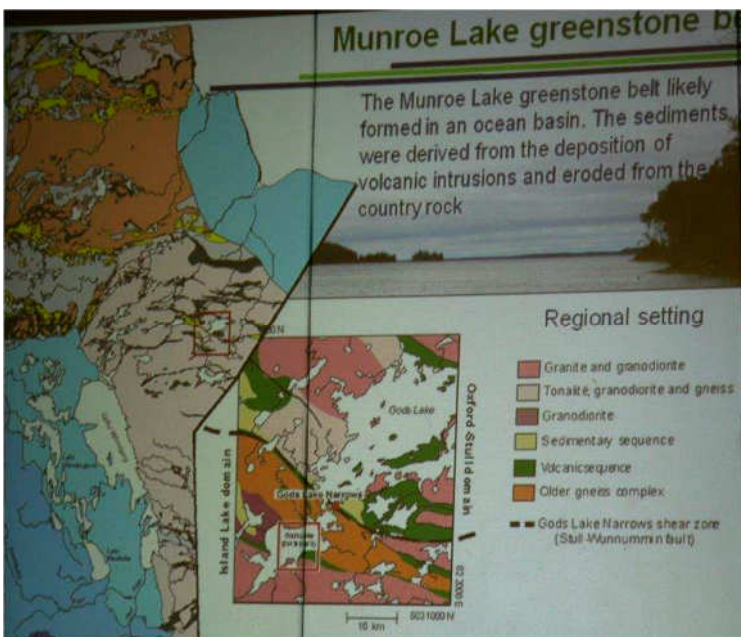
The Mineral Society of Manitoba hosts monthly meetings covering a variety of mineral related topics. In addition, the Mineral Society organizes summer field trips to collecting localities, and hosts educational exhibits about minerals and fossils.

## MARCH PRESENTATION SUMMARY (cont)

The presentation focused on basic requirements needed to attain: jobs, careers, develop or partner on economic opportunities related to mineral resources.

The hands on communication was with compass and other geological equipment, mineral and rock identification procedures, record keeping, and safety discussions.

Earth science was done outside on outcrops and along shorelines. Everyone was welcome, Elders and youth. They were shown and then applied sampling, use of hand lens, measurement of rock structures, and the beginning geology of plate tectonics.



There was also some knowledge sharing - pictographs and knowledge of historical land use and terrain changes.

Obtained geological style camp experience.

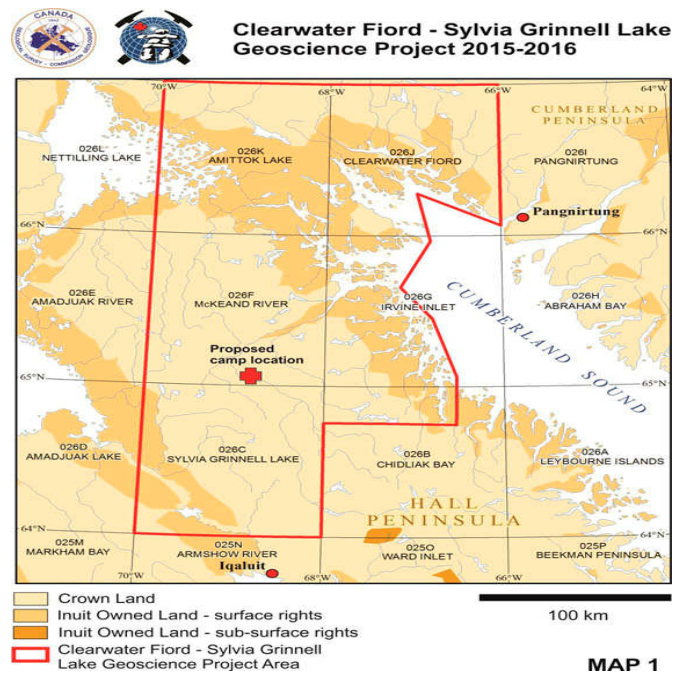
Collaborated with First Nation community in mapping of God's Lake south basin.

Munroe Lake greenstone belt likely formed in an ocean basin. The sediment was derived from the deposition of volcanic intrusion. God's Lake shear zone is at Stull-Wennamin Fault. The north basin is gold bearing. South basin is sulphate bearing. Epidote is found there. Layers of amphibole, dropsied and biotite are only seen in thin sections. Mud is from volcanic rocks.

Participants helped to identify the rock, assisted in accurate note taking, use of camp equipment, safety, and obtained field camp experience on Munroe Lake's greenstone belt. Each community, working together, found out what a geologist does to map the land, what benefits there are in obtaining post-secondary education, and options in partnering with mineral industry.

## MINERAL NEWS

Federal government scientists will survey the geology and landscape of a large area between Iqaluit and Pangnirtung this summer.



Surveyors will cover an area stretching from Clearwater Fiord, just west of Pangnirtung, to Nettilling Lake in the west, and south to Sylvia Grinnell Lake.

Led by the Geological Survey of Canada, the survey's goal is produce new and updated geological maps and detailed information about the land, which may help identify mineral resources as well identify soapstone for carving.

Field trip to Nunavut anyone?